

**MODEL WLPA-200 4,000 lb. Capacity  
HEAVY DUTY FULLY AUTOMATED LOW PROFILE TURNTABLE  
(WITH NO-THREAD<sup>®</sup> POWERED PRE-STRETCH CARRIAGE)**

**MODEL WLPA-200 MACHINE SPECIFICATIONS**  
**HEAVY DUTY FULLY AUTOMATED LOW PROFILE TURNTABLE**

**CAPACITIES**

<u><b>PRODUCTION</b></u> - Up to 55 loads per hour, based on load size and configuration	<u><b>APPROX SHIPPING WEIGHT</b></u> -2,346 lbs.	<u><b>LOAD SIZE</b></u> - 50"W x 50"L x 80"H
<u><b>LOAD WEIGHT</b></u> -4,000 lbs.	<u><b>MACHINE DIMENSIONS *</b></u> - 59¼"W x 119¼"L x 93¼"H * Machine height can exceed by up to 8" when carriage in upmost position	<u><b>ELECTRICAL REQUIREMENTS</b></u> - 120V/1/60 15A
		<u><b>PNEUMATIC REQUIREMENTS</b></u> - None

**FEATURES**

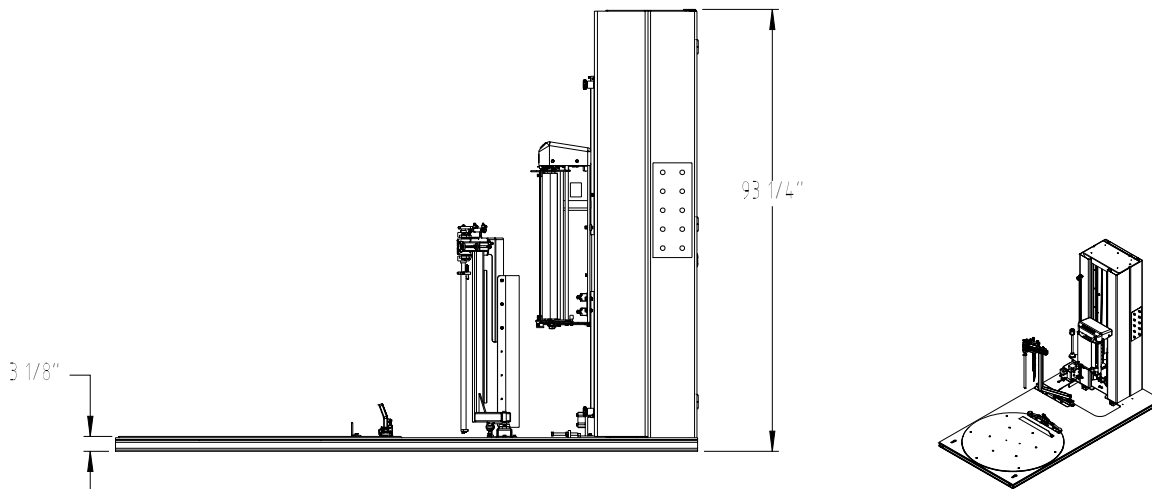
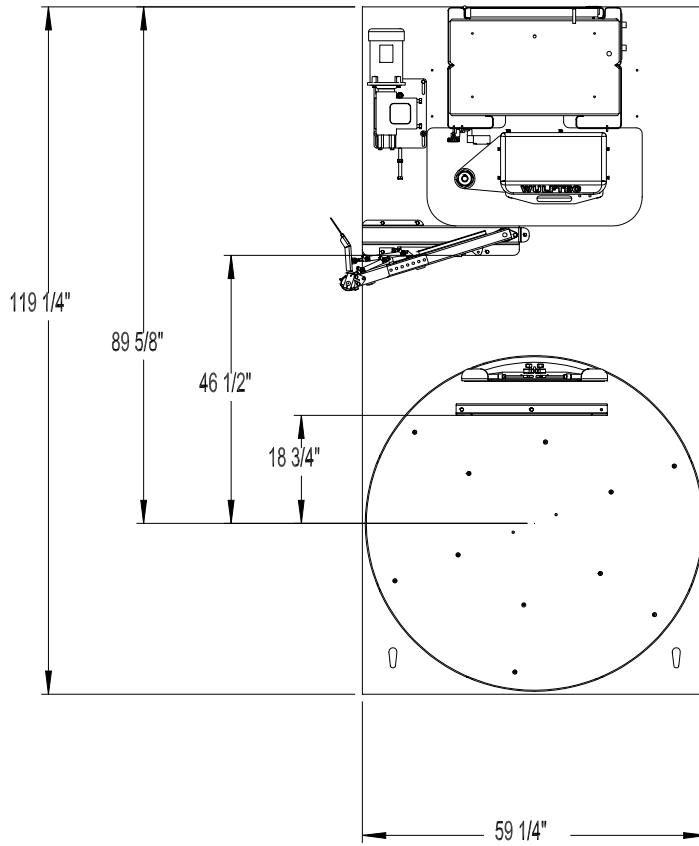
<u><b>CONTROLS</b></u> <ul style="list-style-type: none"> <li>- Allen Bradley Micrologix 1200 PLC</li> <li>- 24V control system</li> <li>- All controls incorporated in tower</li> <li>- Autoheight sensing photoeye with on/off switch</li> <li>- Power on/off switch and indicator light</li> <li>- Separate start/stop push button</li> <li>- Large emergency stop (push pull type)</li> <li>- Manual carriage up/down switch</li> <li>- Variable table speed (12 RPM)</li> <li>- Separate up and down carriage speeds</li> <li>- Separate top and bottom wrap selectors (0-9)</li> <li>- Reinforced wrap/manual rotation control</li> <li>- Positive turntable alignment with real home position</li> <li>- Top cover pause switch (Splash-proof Program)</li> <li>- Film force to load control</li> <li>- Remote pull cord with 40' of cable</li> </ul> <u><b>FILM DELIVERY SYSTEM</b></u> <ul style="list-style-type: none"> <li>- 20" NO-THREAD<sup>®</sup> Powered Pre-Stretch Carriage</li> <li>- 1/2 HP AC motor with Allen Bradley variable frequency drive</li> <li>- 50-300% prestretch ratio (preset to customer spec, Std 200%)</li> <li>- Electronic film tension control with analog sensor</li> <li>- Lexan roller cover</li> <li>- Film force release for easy pull at start and end of cycle</li> </ul> <u><b>FILM TAIL TREATMENT</b></u> <ul style="list-style-type: none"> <li>- Automated Cut/Clamp &amp; Wipe system with bypass switch</li> <li>- Film alignment arm &amp; brush on film tail treatment</li> <li>- Air compressor included</li> </ul> <u><b>FILM CARRIAGE DRIVE</b></u> <ul style="list-style-type: none"> <li>- 1/2 HP AC motor with variable frequency drive</li> <li>- Two #50 chain carriage lifts for safety</li> <li>- Dual ½" CRS ways with UHMW-PE carriage glides</li> </ul>	<u><b>TURNTABLE</b></u> <ul style="list-style-type: none"> <li>- 60" dia. 3/8" steel plate</li> <li>- 22 heavy duty non metallic lube-free table supports</li> <li>- 3-1/8" table height</li> <li>- 2-7/8" high base with full surround for safety and strength</li> <li>- Chain slots for easy pulling or dragging</li> <li>- Ramp ** accessibility on all three sides</li> </ul> <u><b>TURNTABLE DRIVE</b></u> <ul style="list-style-type: none"> <li>- Max. 12 RPM variable speed</li> <li>- 1/2 HP AC motor with Allen Bradley variable frequency drive</li> <li>- #50 ANSI heavy duty chain drive</li> <li>- Electronic soft start/stop</li> <li>- Positive turntable alignment controlled by proximity sensor</li> </ul> <u><b>STRUCTURE</b></u> <ul style="list-style-type: none"> <li>- Formed steel tower consisting of 11 gauge front section and 14 gauge back cabinet section with lockable door</li> <li>- Forklift Portable base design</li> <li>- Heavy duty structural steel construction</li> </ul> <u><b>TECHNICAL INFORMATION</b></u> <ul style="list-style-type: none"> <li>- The machine is provided with a manual including electro/mechanical schematics and drawings</li> <li>- Trouble shooting guide</li> <li>- Installation instructions</li> </ul> <u><b>WARRANTY</b></u> <ul style="list-style-type: none"> <li>- All Wulftec's semi-automatic machines come with a three year warranty</li> <li>- All Wulftec prestretch compound rollers have a lifetime warranty. (see Chapter 9 for complete warranty)</li> </ul> <p align="right">** OPTIONAL</p>
---	--




209 Wulftec  
 Ayer's Cliff, Quebec, Canada  
 J0B 1C0  
 Tel.: (819) 838-4232  
 Fax: (819) 838-5539  
 E Mail: [wulftec@wulftec.com](mailto:wulftec@wulftec.com)  
 Web Site: <http://www.wulftec.com>

DISTRIBUTED BY:

**Note: All machine specifications and pricing are subject to change without prior notice.**



5/4/04

LR105922  
 **MODEL WLPA-200 4,000 lb. Capacity**  
**HEAVY DUTY LOW PROFILE TURNTABLE**  
**(WITH NO-THREAD<sup>®</sup> POWERED PRE-STRETCH CARRIAGE)**