



**WULFTEC**®

M. J. MAILLIS GROUP

©2004 Wulftec International Inc



**MODEL WCRT-200 4,000 lb. Capacity  
HEAVY DUTY CONVEYORIZED AUTOMATIC ROTARY ARM  
(WITH NO-THREAD® POWERED PRE-STRETCH CARRIAGE)**

## MODEL WCRT-200 MACHINE SPECIFICATIONS HEAVY DUTY CONVEYORIZED AUTOMATIC ROTARY ARM

### CAPACITIES

**PRODUCTION**

- Up to 65 loads per hr., based on load configuration and machine options.  
Higher speeds can be obtained with different options

**LOAD WEIGHT**

- 4,000 lbs.

**APPROX SHIPPING WEIGHT**

- 4,463 lbs.

**LOAD SIZE**

- Min. - 36"W x 36"L x 10"H  
- Max. - 48"W x 48"L x 80"H

**ELECTRICAL REQUIREMENTS**

- 230/3/60, 15 AMP  
(other voltage available upon request) \*\*

**PNEUMATIC REQ.**

- 3 CFM @ 80 PSI comes with FR (Filter, Regulator)

**MACHINE DIMENSIONS**

126"W x 150"L x 140"H \*

\* Overall dimensions of the system in operation.

### FEATURES

**CONTROLS**

- Allen Bradley SLC 5/03 PLC
- 24V control system
- Current overload protection with AC drive
- Nema 12 control cabinet with quick disconnect
- Auto-height sensing photoeye with on/off mode
- Power on/off lockable switch and indicator light
- 1 E-STOP mushroom type push button on the control panel and one in the wrapping zone
- Allen Bradley **Touch Panel**
- Variable rotary arm speed (17 RPM)
- Separate up and down carriage speeds
- Separate top and bottom wrap selections (0-9)
- Positive arm alignment
- Film force to load control
- Double brush dust tight slip ring
- Emergency stop sensor for arm path obstruction
- Dynamic braking system for rotary arm with AC drive
- Alarm beacon light
- Manual clamp jog
- Manual function for rotation fwd/rev., carriage up/down
- All conveyor fwd/rev.
- Intuitive alarm diagnostic on touch screen
- Reset function
- Air pressure switch

**FILM DELIVERY SYSTEM**

- 20" NO-THREAD<sup>®</sup> Powered Pre-Stretch Carriage
- 1/2 HP AC motor with Allen Bradley variable frequency drive
- 50-300% prestretch ratio (preset to customer spec, Std 200%)
- Electronic film tension control with analog sensor
- Lexan roller cover
- Film force release for easy pull at start and end of cycle
- Angled carriage to wrap approximately 2" from conveyor level

**FILM CARRIAGE DRIVE**

- 3/4 HP AC with Allen Bradley variable frequency drive
- Two #50 chain carriage lifts for safety
- Dual 1/2" CRS ways with UHMW-PE carriage glides
- Dual steel boom

**ROTARY ARM**

- All structural steel construction
- (4) 6" X 6" floor mounting legs

**FILM TAIL TREATMENT**

- Automatic film clamping
- Pulsed controlled cutter
- Film alignment arm
- Brush-on film tail treatment, **Heat Seal available** \*\*

**ROTARY ARM DRIVE**

- 25" **Ring Gear Bearing** drive/support
- Automated Lube Station.
- Max. 17 RPM variable speed
- 1 HP AC motor with Allen Bradley variable frequency drive
- Electronic soft start/stop
- Positive arm alignment controlled by proximity sensor
- Protection guard over the ring gear bearing
- Dynamic braking system for rotary arm with AC drive

**CONVEYOR**

- Powered process conveyor, 11'-6" long
- Standard: Pass height 18", **other pass heights available** \*\*
- 3/16" wall cold rolled electric welded steel rollers
- 2 1/2" dia. rollers on 3" centers
- 52" BFR (between frame rails)
- All rollers driven via #40 chain
- 3/4 HP AC motor with Allen Bradley variable frequency drive
- Heavy duty design
- Heavy duty cast iron flange mounted bearings
- Up to 35 feet per minute, **other speeds available** \*\*
- **Additional conveyors and other types available upon request.** \*\*

**STRUCTURE**

- Free standing integrated leg design
- Heavy duty structural steel construction
- Heavy duty safety fencing with one interlocked access door enclosing the wrapping zone
- Easy access to all components

**TECHNICAL INFORMATION**

- The machine is provided with a manual including electro/mechanical schematics and drawings
- Trouble shooting guide
- Installation instructions

**WARRANTY**

- All Wulftec automatic machines come with a three year warranty.
- **All 25" ring gear bearings are warranted for ten years.**
- All Wulftec prestretch compound rollers have a lifetime warranty. (see Chapter 9 for complete warranty)

\*\* OPTIONAL



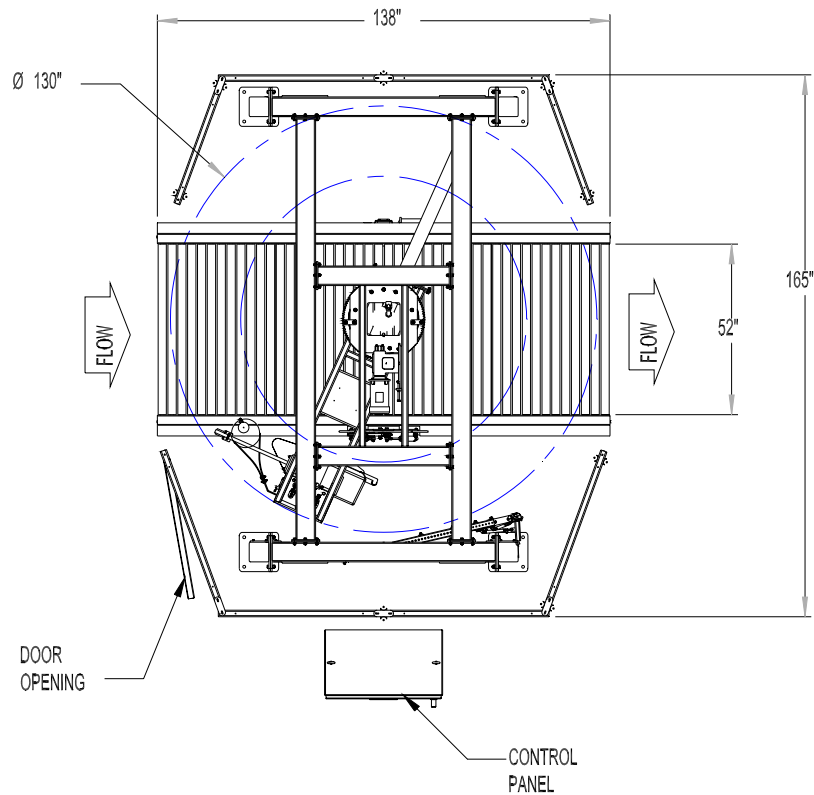
LR105922



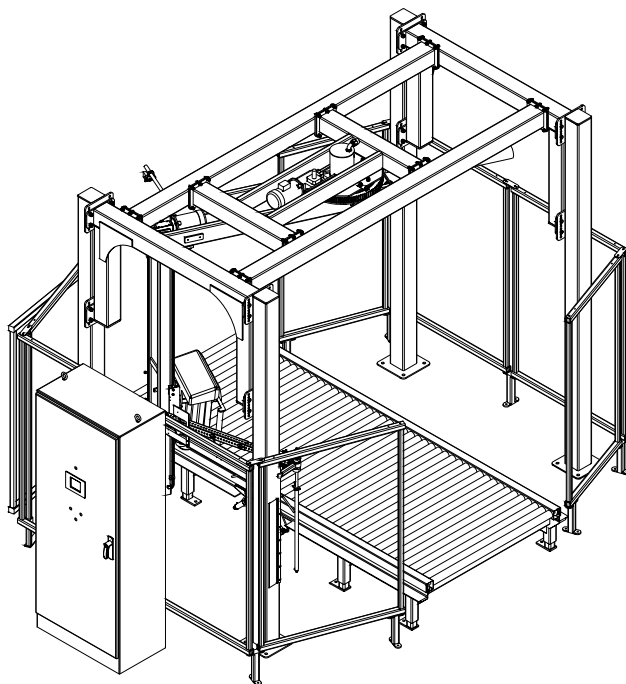
209 Wulftec  
Ayer's Cliff, Quebec, Canada  
J0B 1C0  
Tel.: (819) 838-4232  
Fax: (819) 838-5539  
Toll free (877) WULFTEC  
(877) 985-3832  
E Mail: [wulftec@wulftec.com](mailto:wulftec@wulftec.com)  
Web Site: <http://www.wulftec.com>

DISTRIBUTED BY:

**Note: All machine specifications and pricing are subject to change without prior notice.**



5/4/04



LR105922



**MODEL WCRT-200**  
**4,000 lb. Capacity**  
**HEAVY DUTY CONVEYORIZED**  
**AUTOMATIC ROTARY ARM**  
**(WITH NO-THREAD<sup>®</sup> POWERED**  
**PRE-STRETCH CARRIAGE)**